

Refer to detail of the cab, chassis and chassis frame drawing based on following table.

MODEL NAME	PRODUCTION CODE	8.1. CAB DRAWINGS	8.2. CAB BACK DRAWINGS	8.3. CHASSIS DRAWINGS	8.4. CHASSIS FRAME DRAWINGS
HINO 51528	GT8JJMA-UGU	C-1	CB-1	CH-1	CF-1
	GT8JJMA-UUU	C-2	CB-2	CH-3	CF-1
	GT8JKMA-UGU	C-1	CB-1	CH-2	CF-2
	GT8JKMA-UUU	C-2	CB-2	CH-4	CF-2

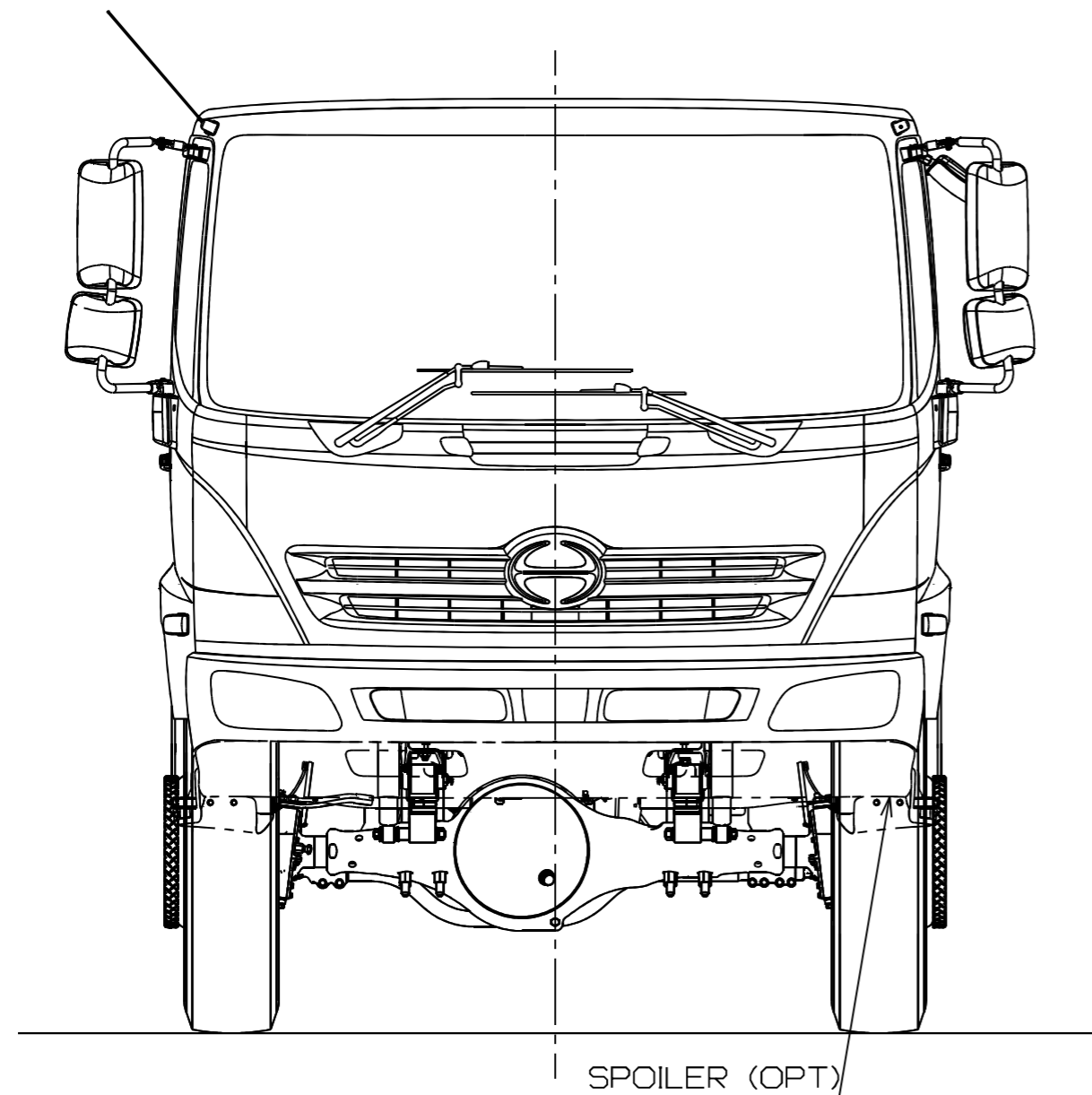
1. CAB DRAWINGS

No. C-1

PRODUCTION CODE : GT8JJMA-UGU
GT8JKMA-UGU

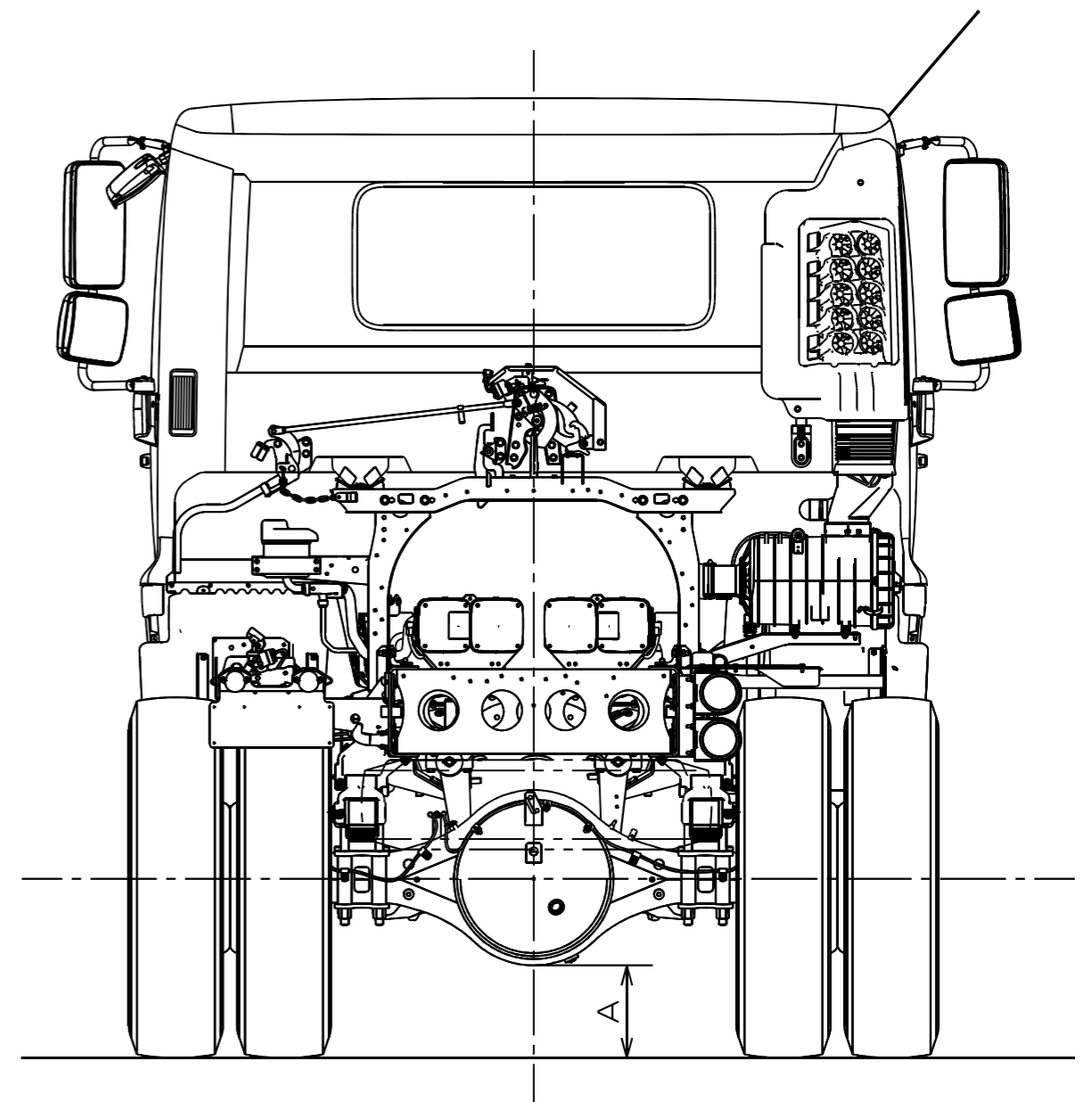
Unit : mm

• Front



• Rear

MODEL	TIRE	A
GT8JJMA-UGU	235/75R17.5	255
GT8JKMA-UGU		



No. C-2

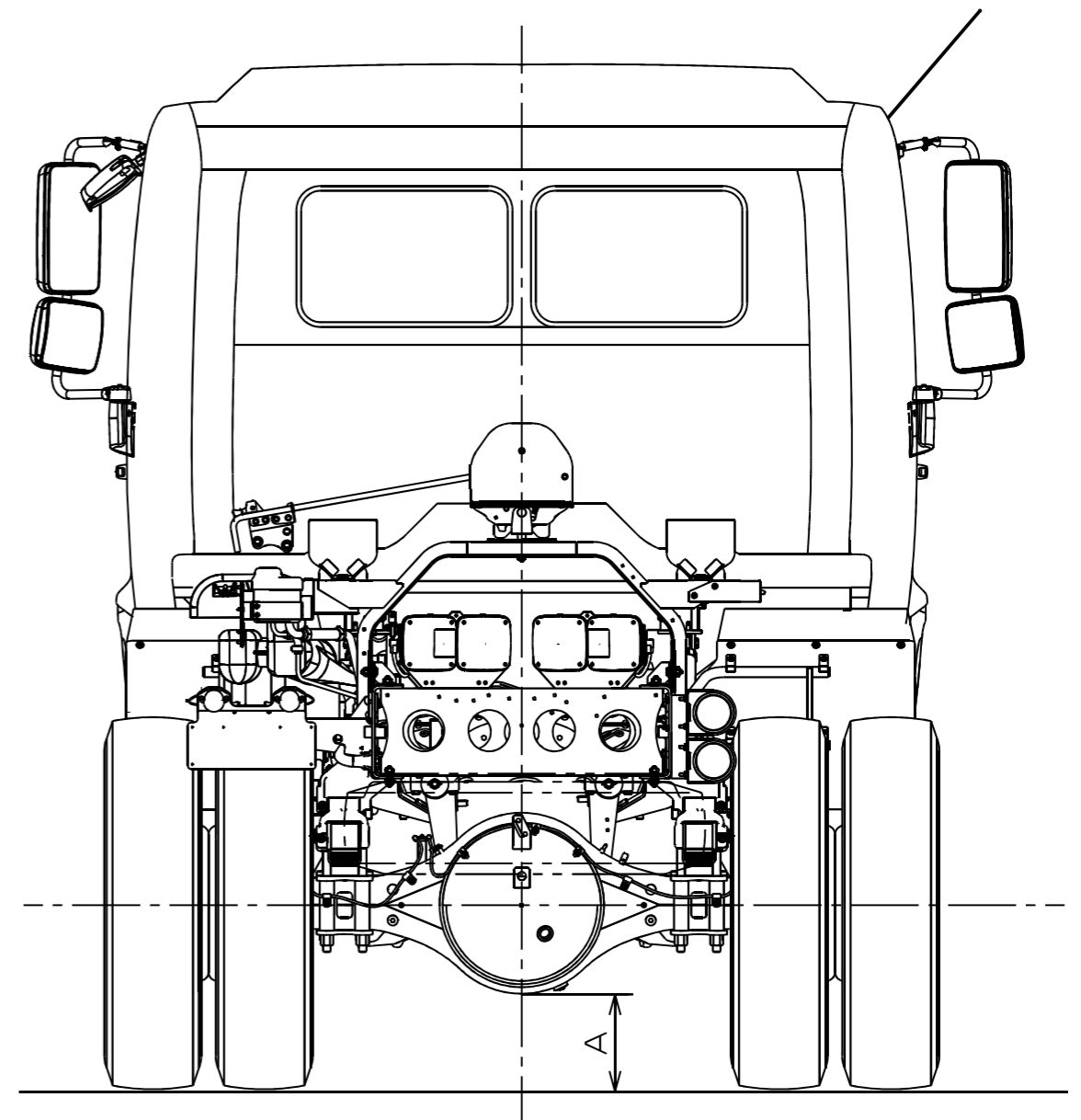
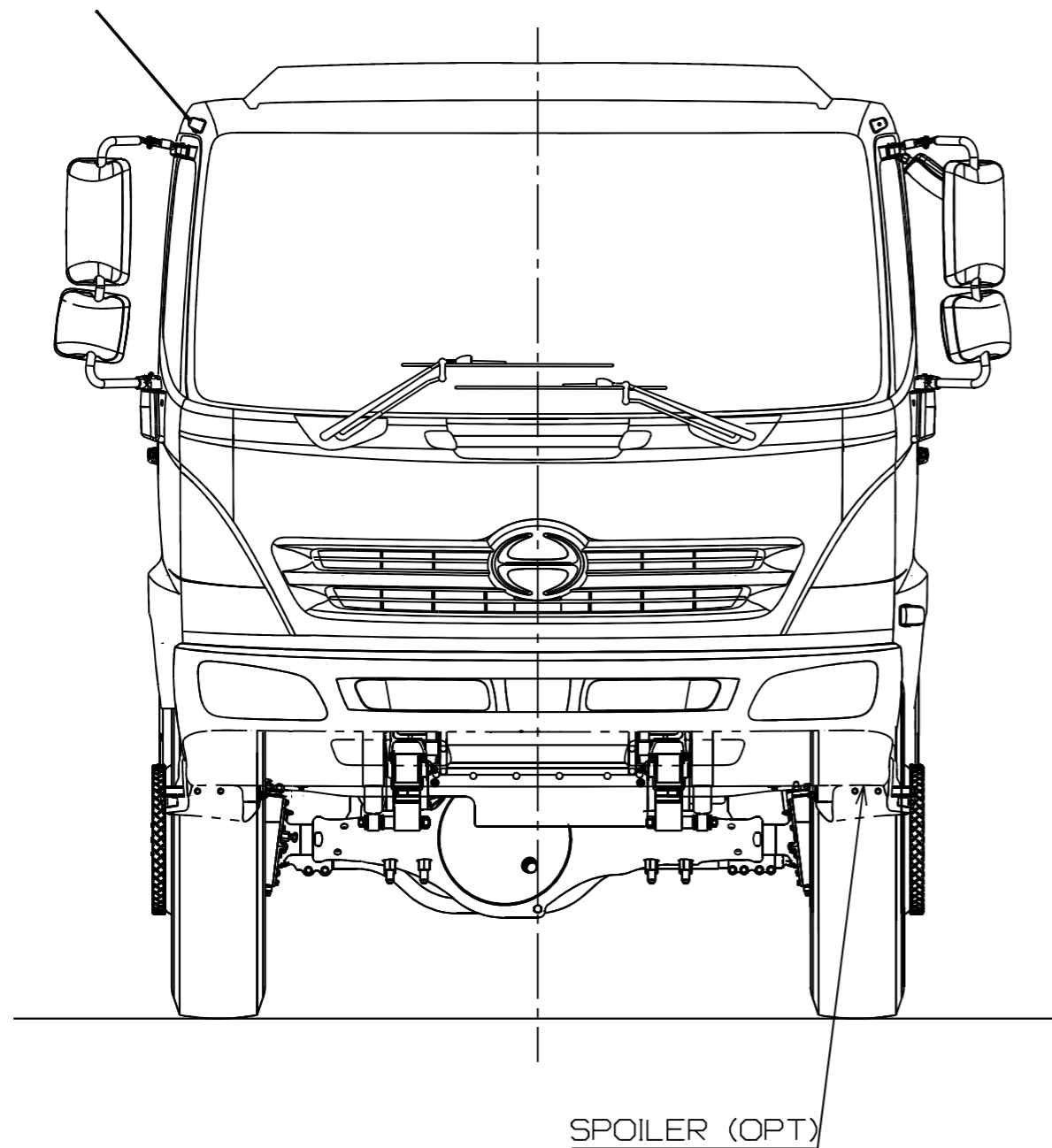
PRODUCTION CODE : GT8JJMA-UUU
GT8JKMA-UUU

Unit : mm

• Front

• Rear

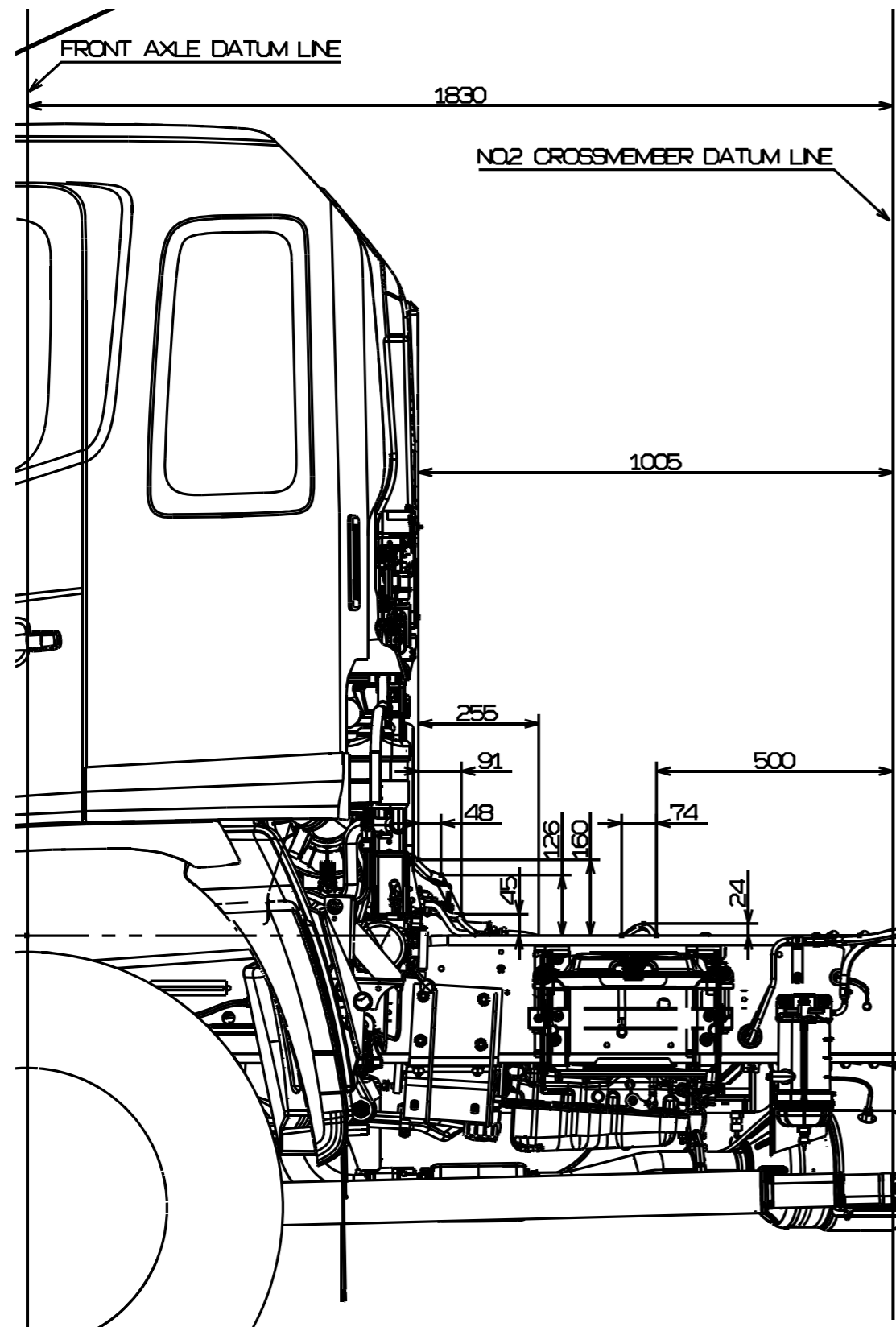
MODEL	TIRE	A
GT8JJMA-UUU GT8JKMA-UUU	11R22.5-16PR	255



2. CAB BACK DRAWINGS

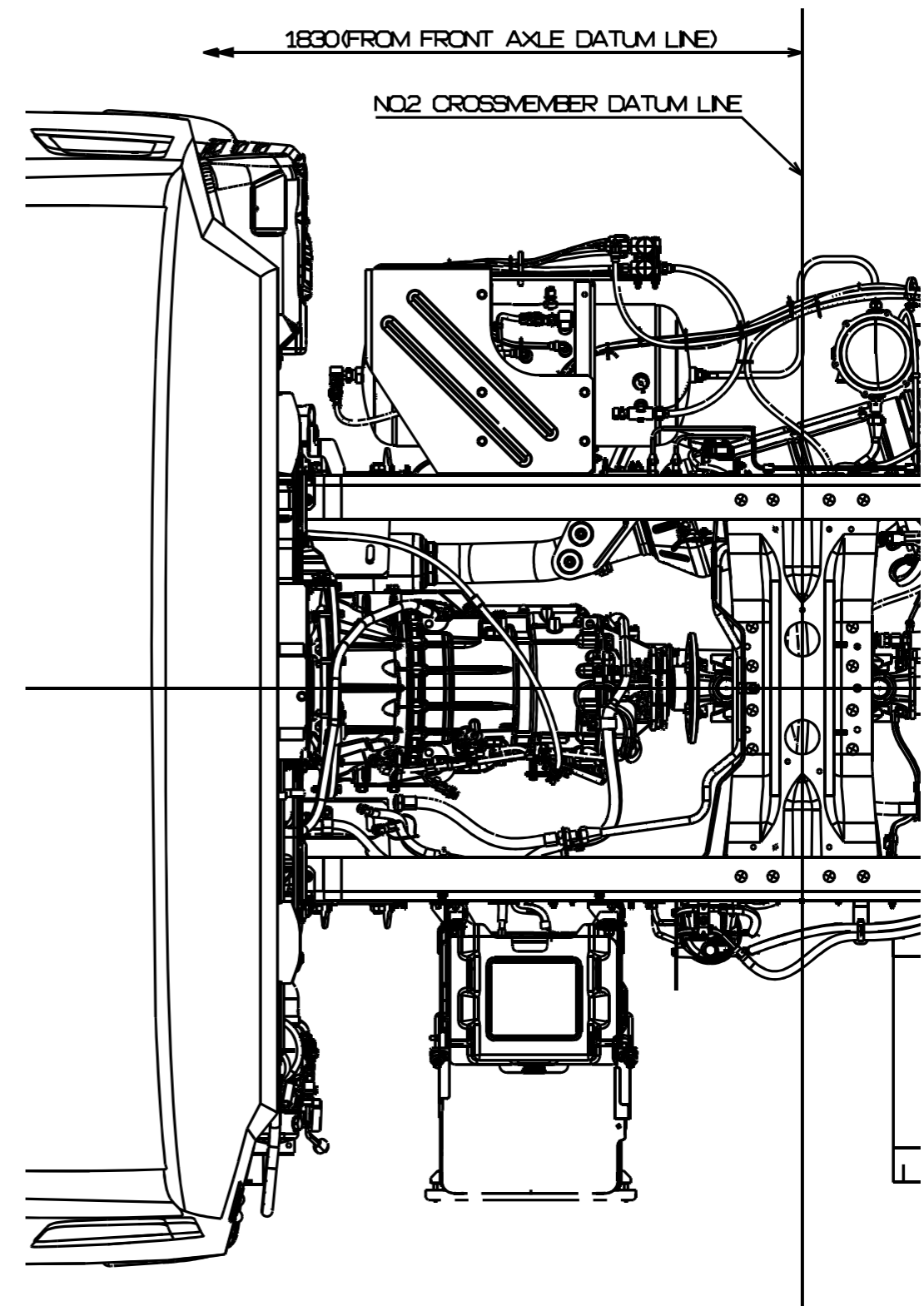
No. CB-1 PRODUCTION CODE : GT8JJMA-UGU
GT8JKMA-UGU

• Left view



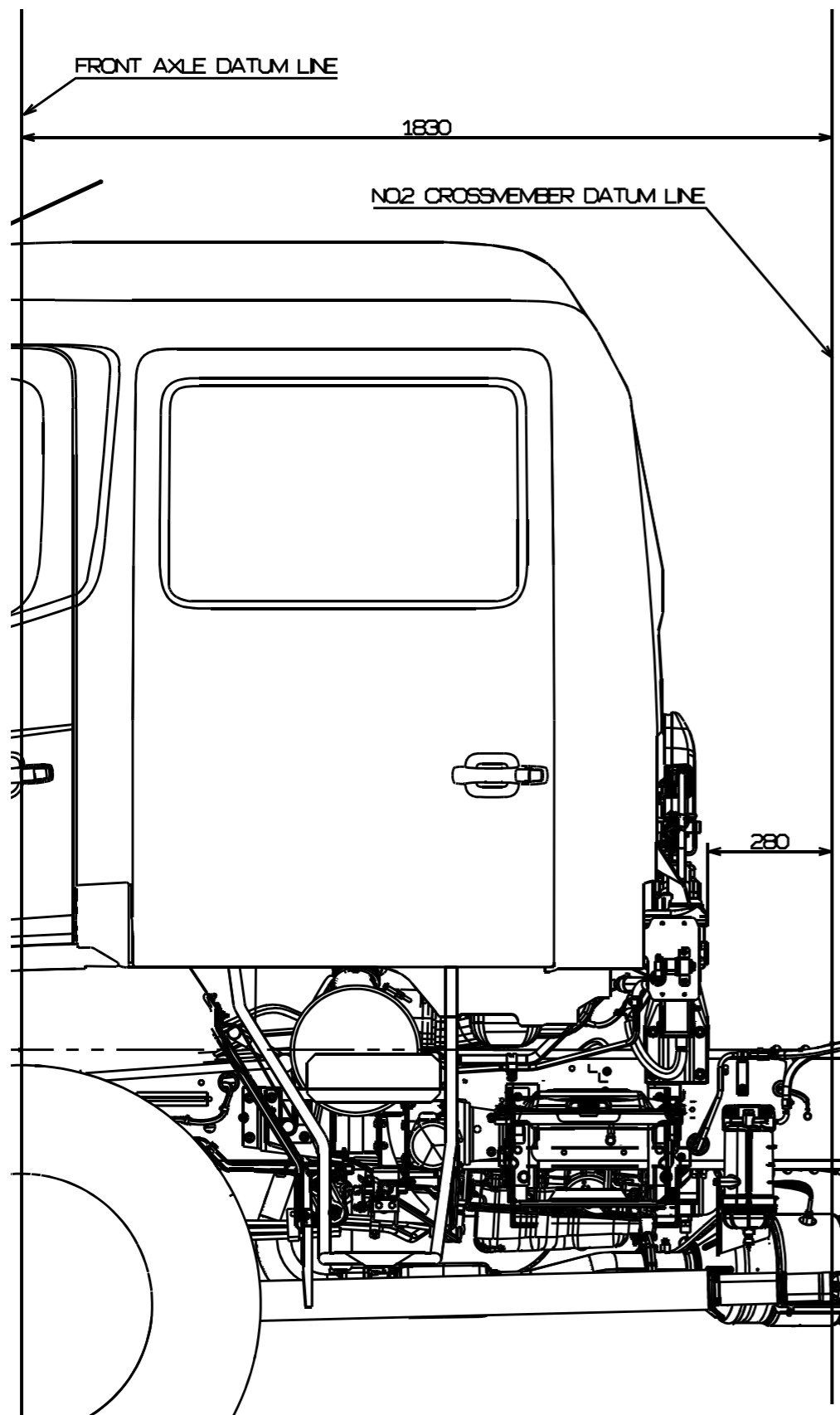
• Upper view

Unit : mm



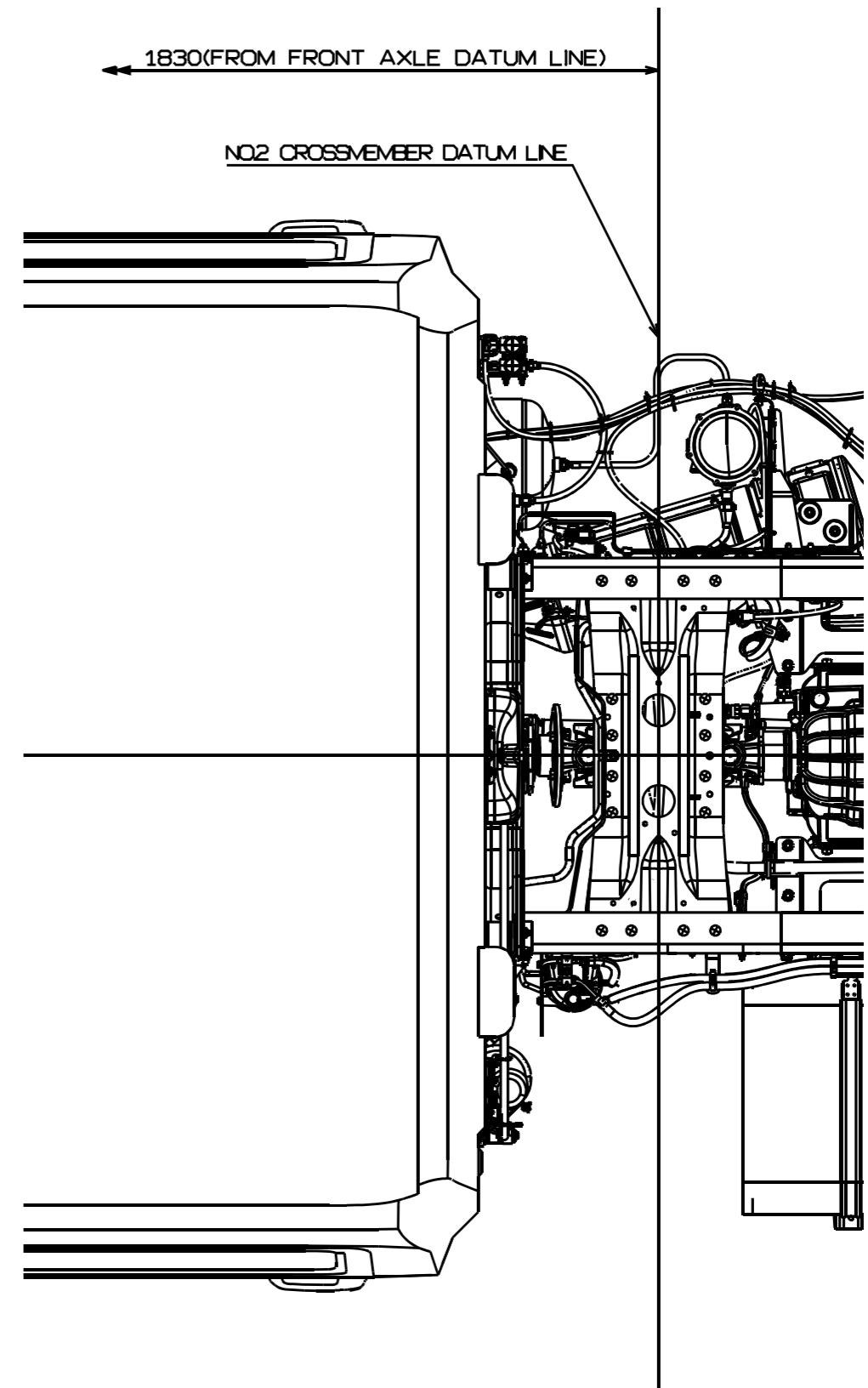
No. CB-2 PRODUCTION CODE : GT8JJMA-UUU
GT8JKMA-UUU

• Left view



• Upper view

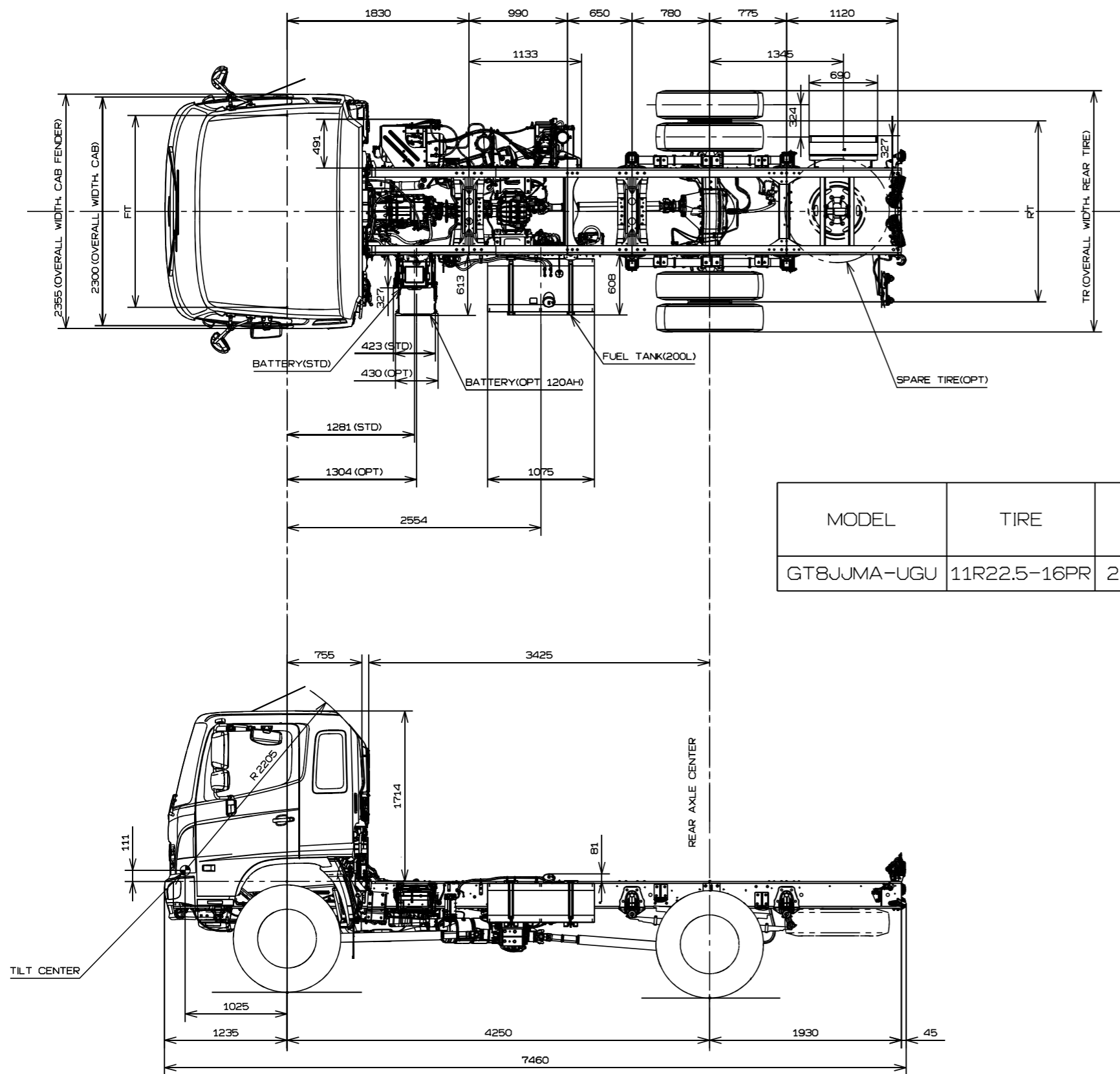
Unit : mm



3. CHASSIS DRAWINGS

Unit : mm

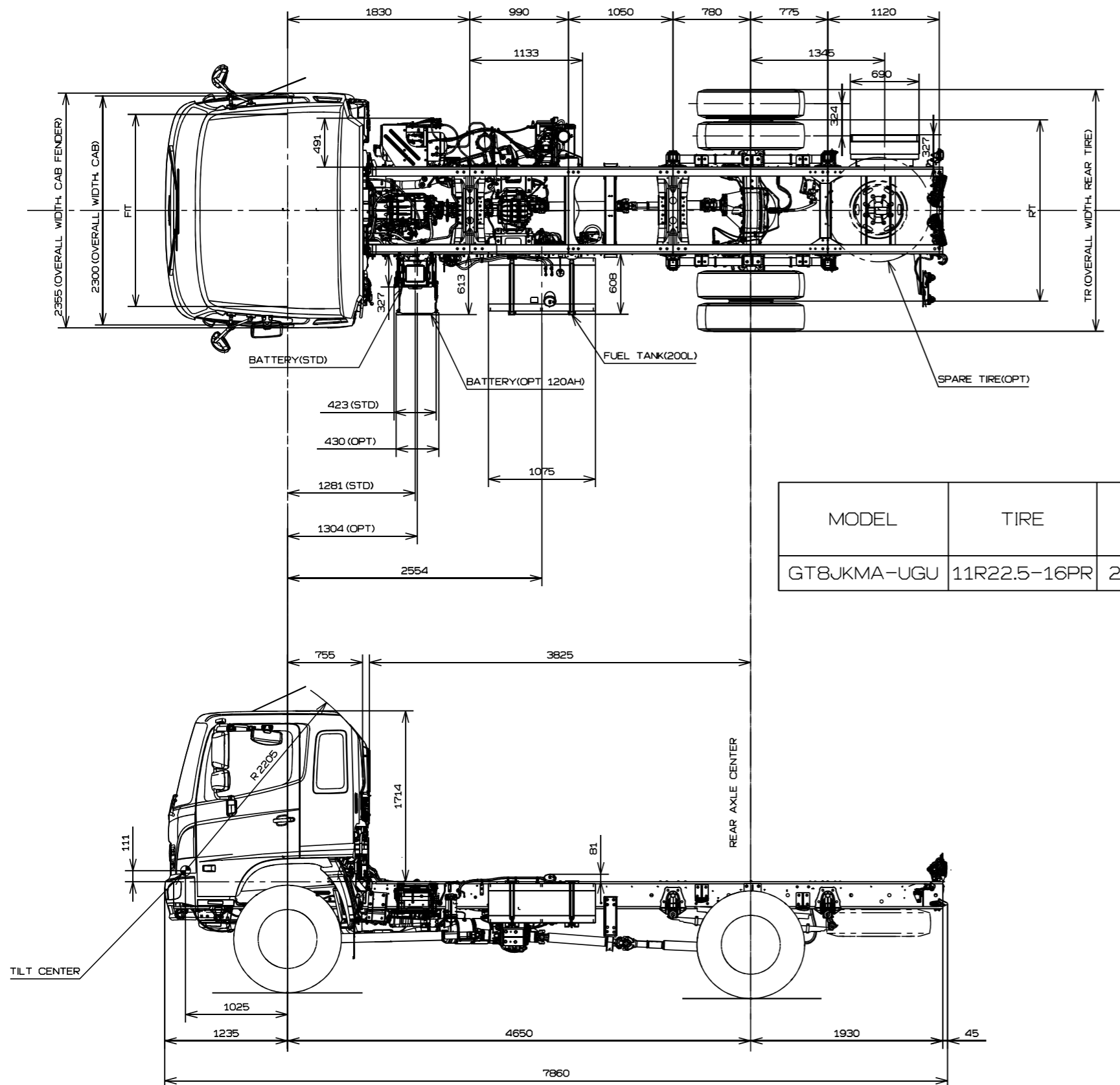
No. CH-1



MODEL	TIRE	WHEEL	GROUND HEIGHT, FRAME UPPER SURFACE				FT	RT	TR
			Hf _o	Hf	Hr	Hr _o			
GT8JJMA-UGU	11R22.5-16PR	22.5×7.50-162-13	1130	1155	1240	1280	1930	1820	2415

No. CH-2

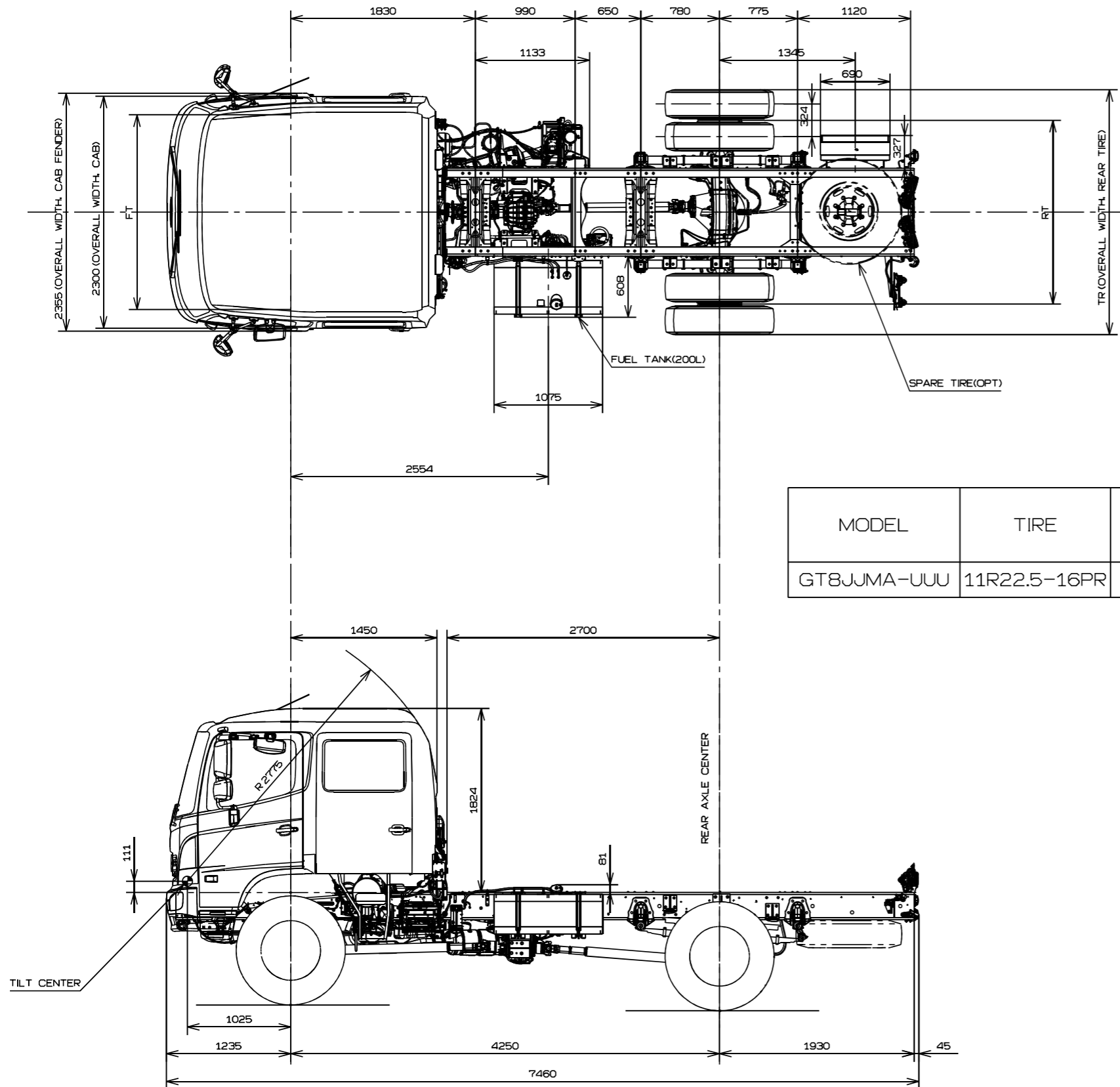
Unit : mm



MODEL	TIRE	WHEEL	GROUND HEIGHT, FRAME UPPER SURFACE				FT	RT	TR
			Hf0	Hf	Hr	Hf0			
GT8JKMA-UGU	11R22.5-16PR	22.5X7.50-162-13	1130	1150	1240	1275	1930	1820	2415

No. CH-3

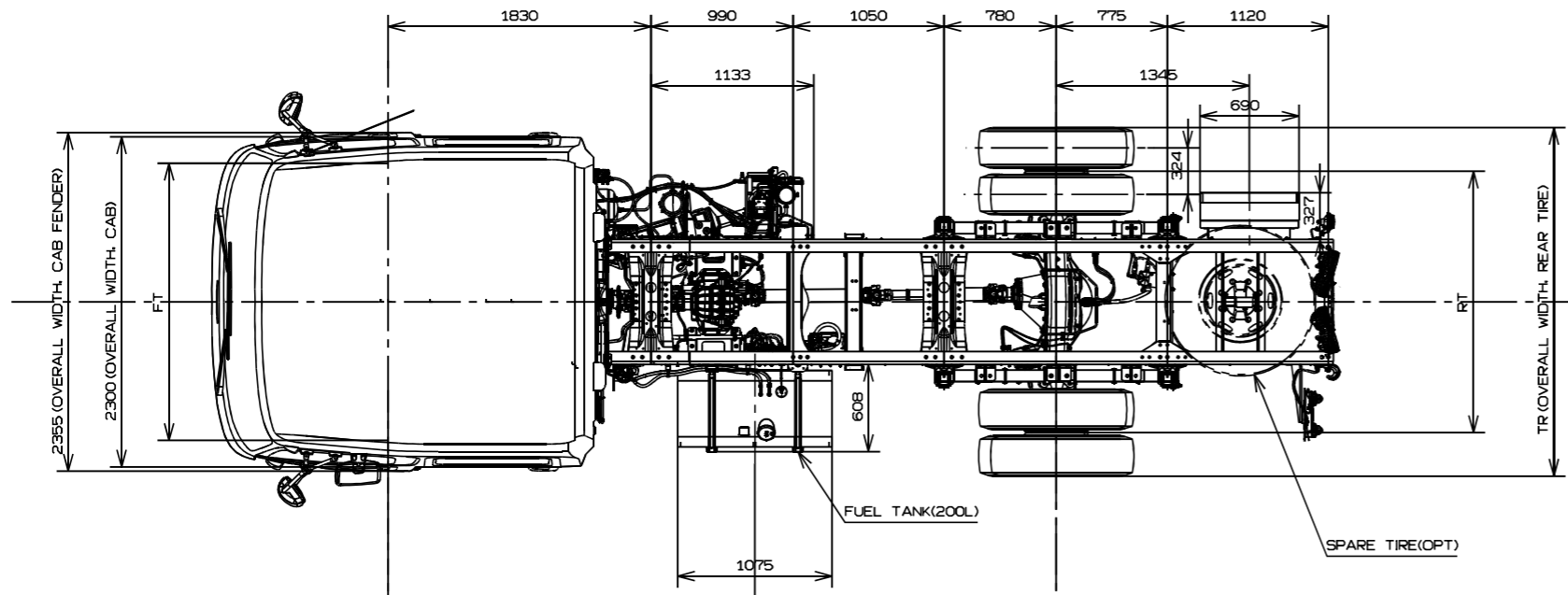
Unit : mm



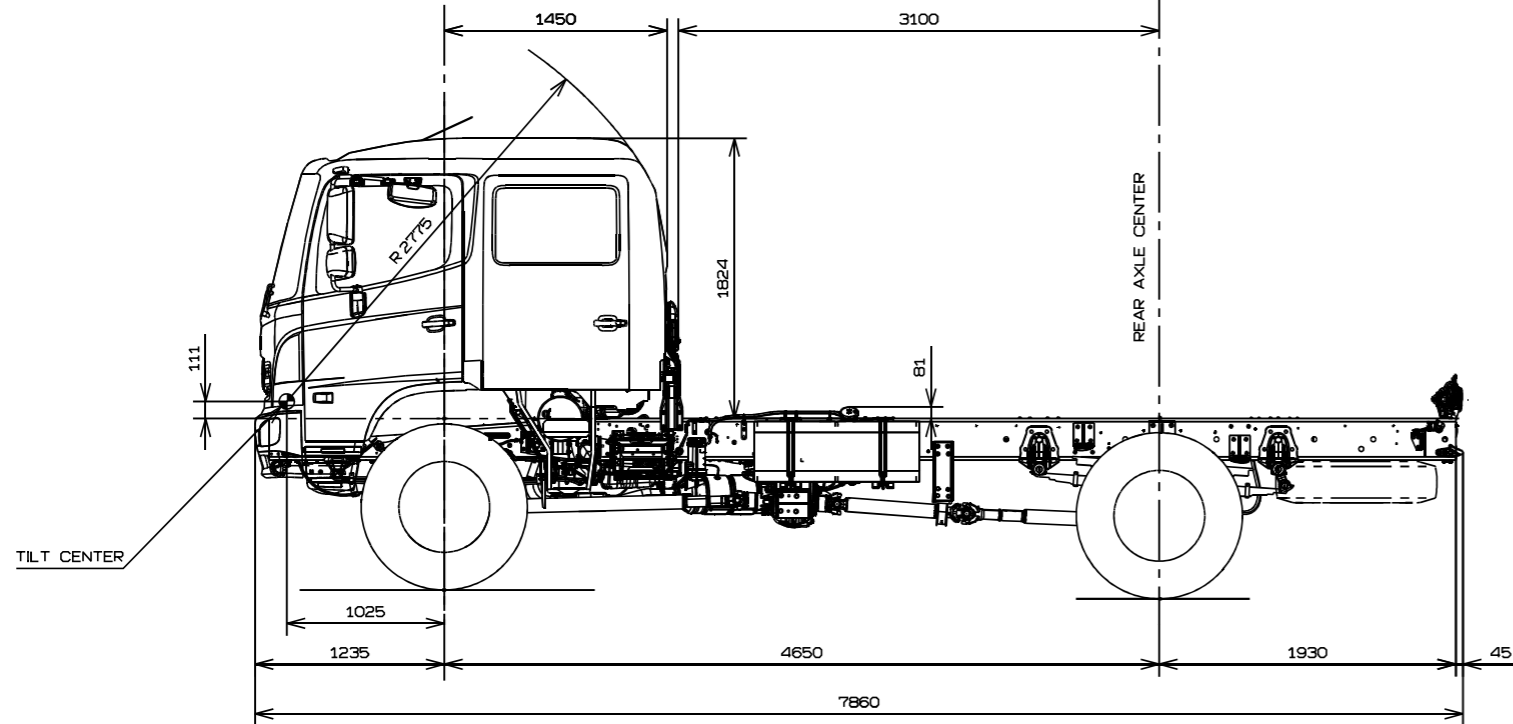
MODEL	TIRE	WHEEL	GROUND HEIGHT, FRAME UPPER SURFACE				FT	RT	TR
			Hfo	Hf	Hr	Hro			
GT8JJMA-UUU	11R22.5-16PR	22.5x7.50-162-13	1125	1150	1240	1280	1930	1820	2415

No. CH-4

Unit : mm



MODEL	TIRE	WHEEL	GROUND HEIGHT, FRAME UPPER SURFACE				FT	RT	TR
			Hfo	Hf	Hr	Hro			
GT8JKMA-UUU	11R22.5-16PR	22.5X7.50-162-13	1125	1150	1240	1275	1930	1820	2415

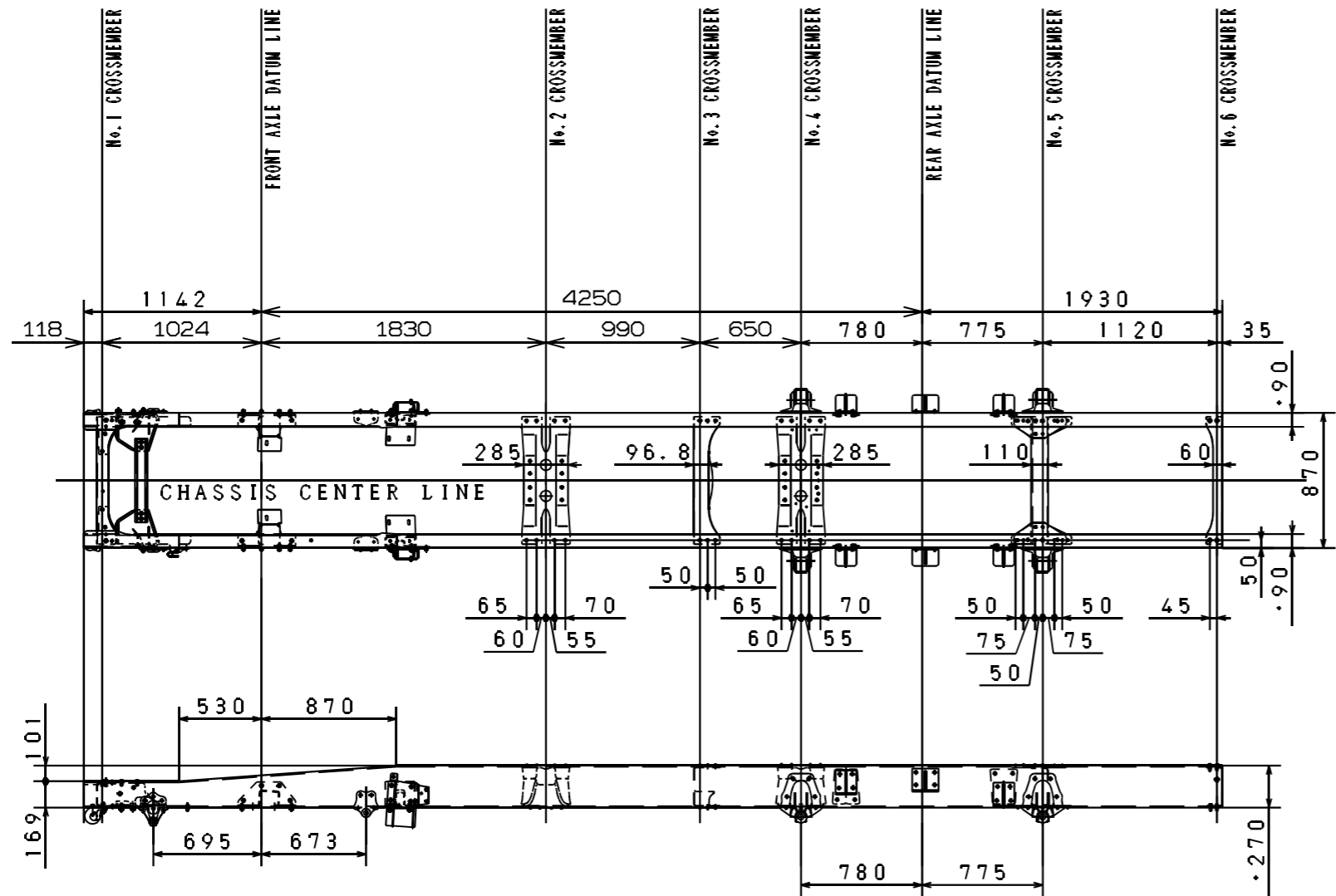


4. CHASSIS FRAME DRAWINGS

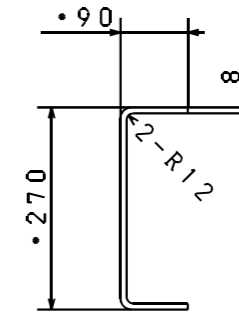
No. CF-1 PRODUCTION CODE : GT8JJMA-UGU
GT8JJMA-UUU

Unit : mm

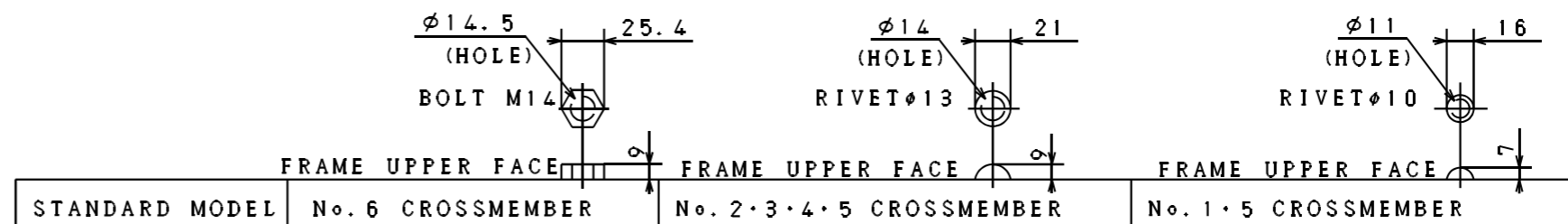
• Detail of the chassis frame



DETAIL OF FRAME END



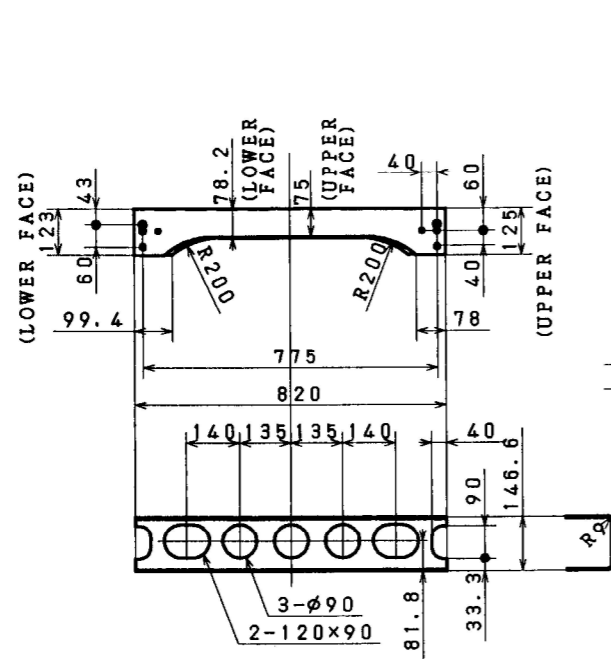
DETAILS OF BOLT AND RIVET



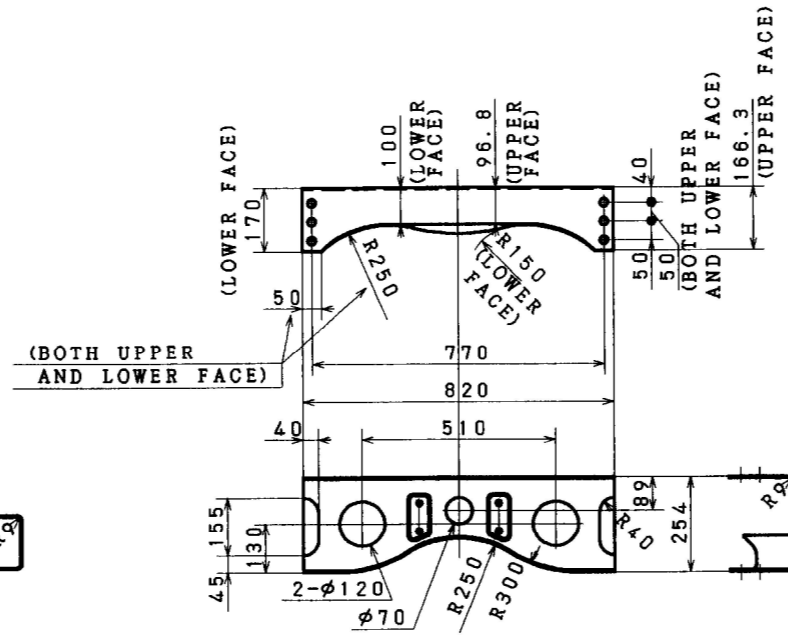
No. CF-1 PRODUCTION CODE : GT8JJMA-UGU
GT8JJMA-UUU

Unit : mm

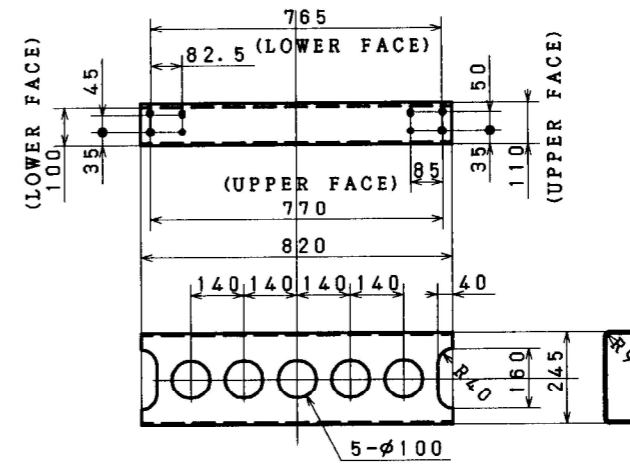
• Detail of the cross member



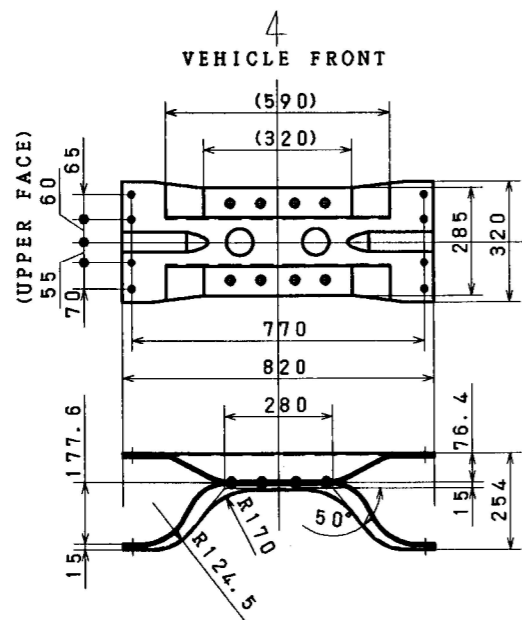
No. 1 CROSSMEMBER



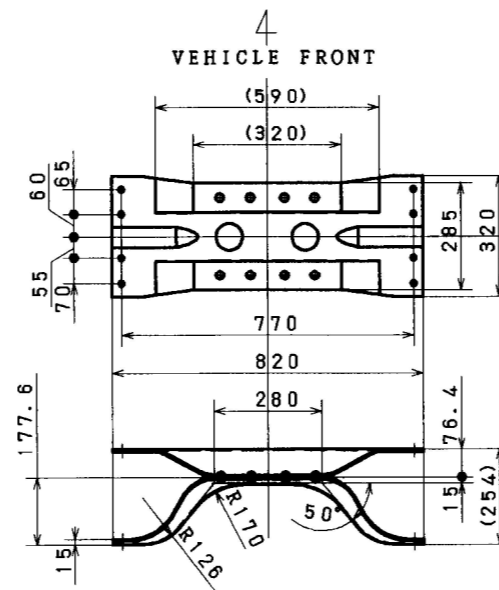
No. 3 CROSSMEMBER



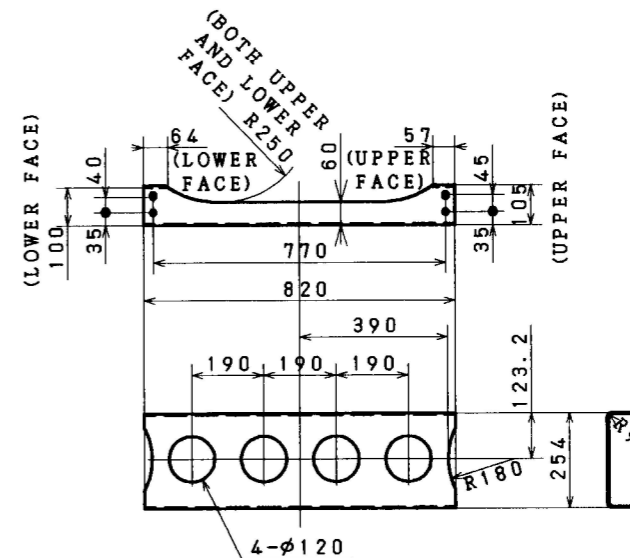
No. 5 CROSSMEMBER



No. 2 CROSSMEMBER



No. 4 CROSSMEMBER



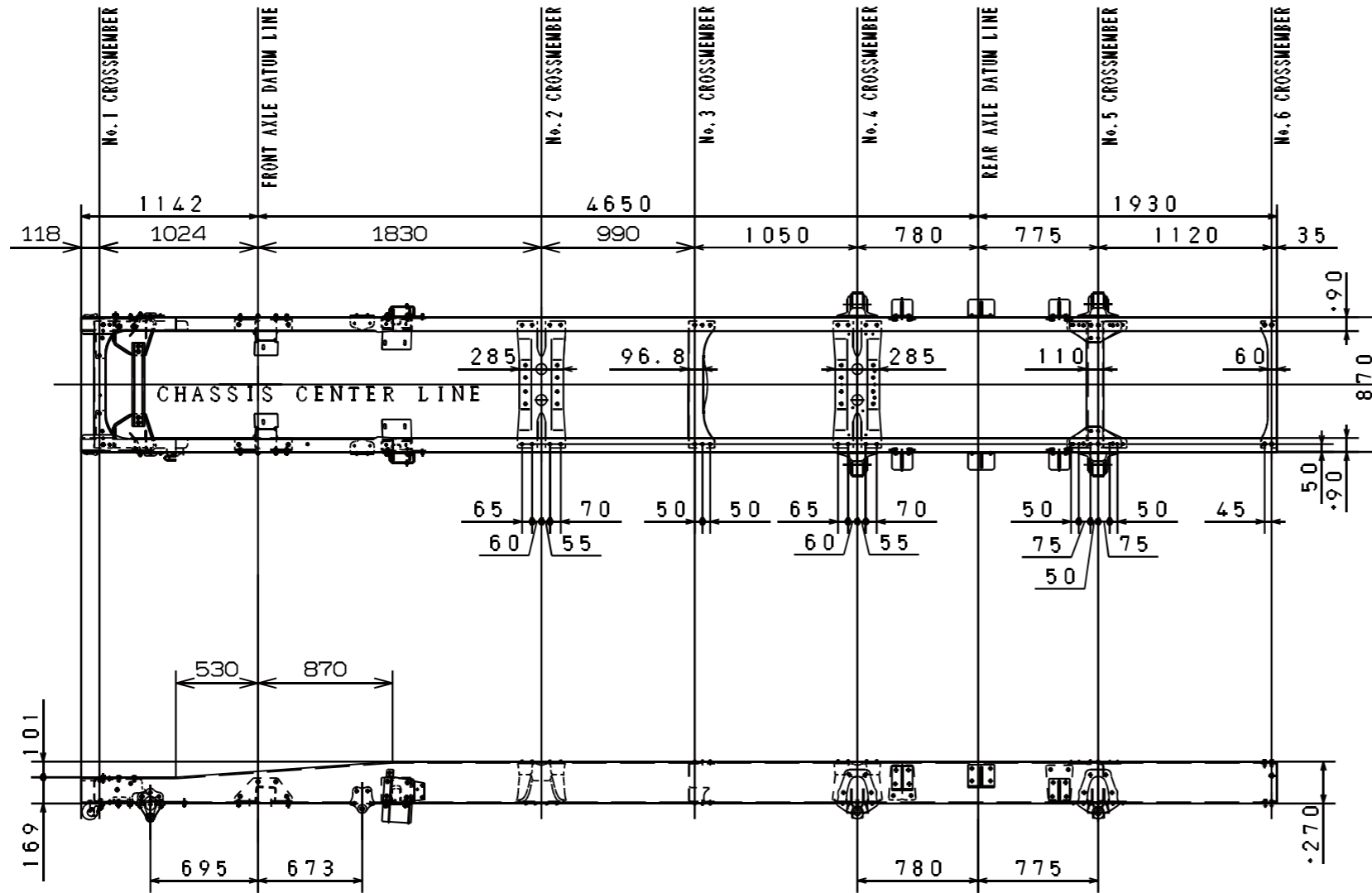
No. 6 CROSSMEMBER

DGT8 CF GT1JKPA2

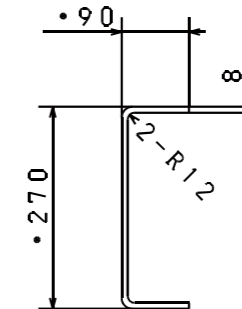
No. CF-2 PRODUCTION CODE : GT8JKMA-UGU
GT8JKMA-UUU

Unit : mm

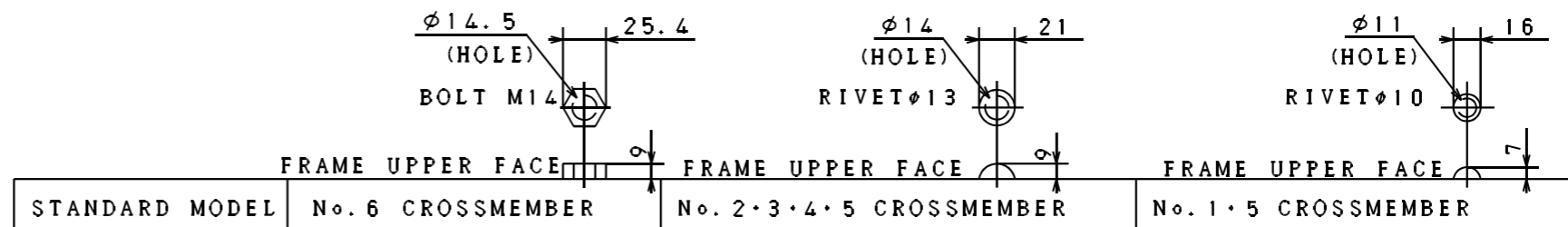
• Detail of the chassis frame



DETAIL OF FRAME END



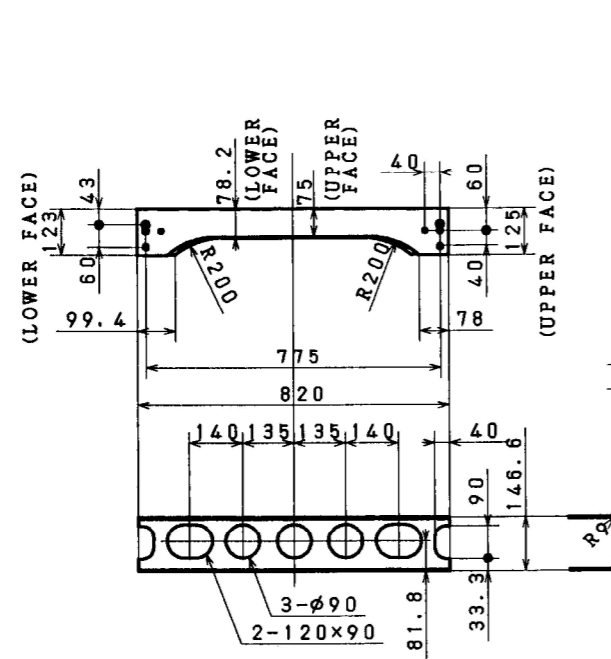
DETAILS OF BOLT AND RIVET



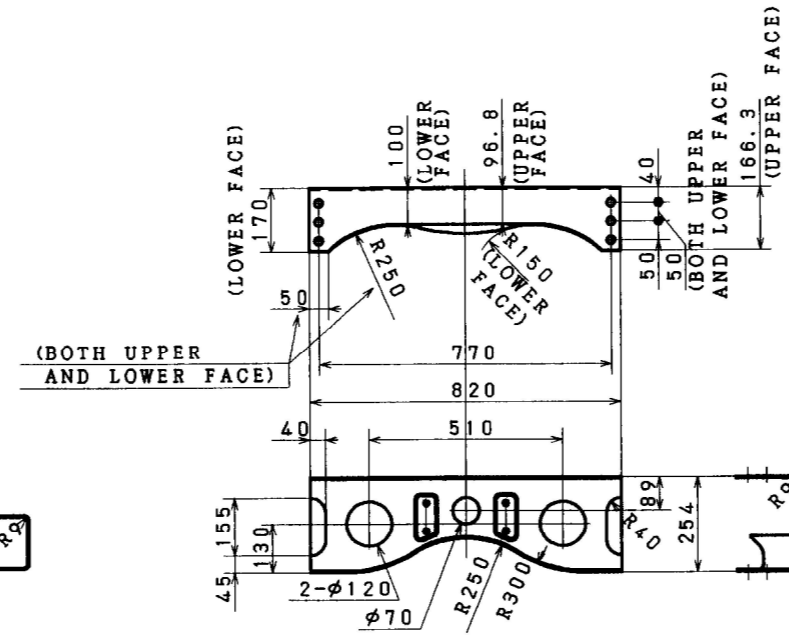
No. CF-2 PRODUCTION CODE : GT8JKMA-UGU
GT8JKMA-UUU

Unit : mm

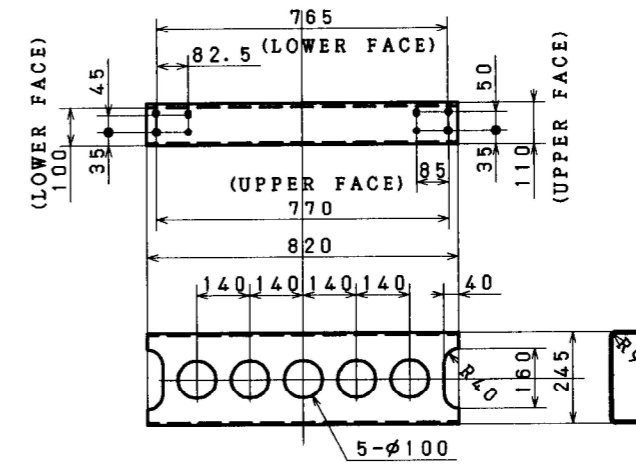
• Detail of the cross member



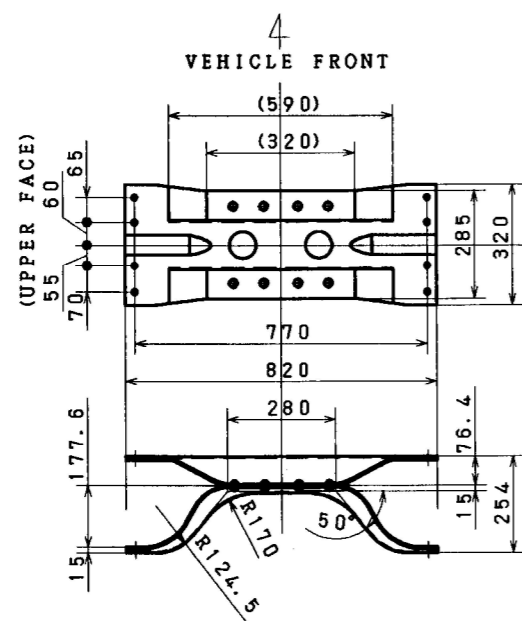
No. 1 CROSSMEMBER



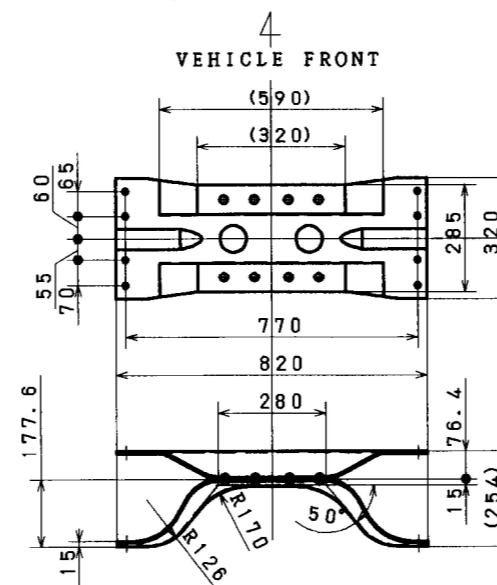
No. 3 CROSSMEMBER



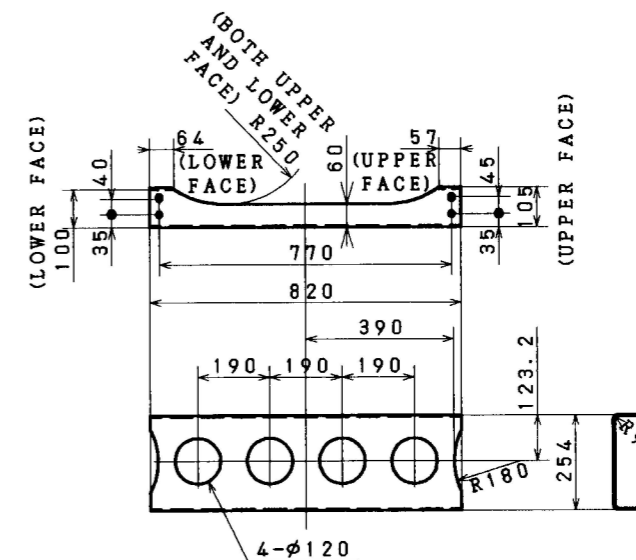
No. 5 CROSSMEMBER



No. 2 CROSSMEMBER



No. 4 CROSSMEMBER



No. 6 CROSSMEMBER

DGT8 CF GT1JKPA2